

ACCESS PLATES AND PANELS IDENTIFICATION - DESCRIPTION AND OPERATION

1. General

- A. The airplane access plates cover holes that are small. Access panels cover access areas that are larger in comparison with access plates. Any access cover with a hinge is identified as a door.

2. Description

NOTE: Access doors are on the left side of the cargo pod, if installed, and on the left and right side of the engine cowling. Refer to Chapter 52, General for location of other doors.

- A. Access plates are on the lower surface of each wing, the bottom of the fuselage, the right side of the empennage, the side of the vertical stabilizer, and on the bottom of each horizontal stabilizer. Access panels are on the bottom of the fuselage, the bottom of the empennage, and if installed, on the left side of the cargo pod. Refer to the figures that follow:

- (1) Figure 1
- (2) Figure 2
- (3) Figure 3
- (4) Figure 4
- (5) Figure 5
- (6) Figure 6
- (7) Figure 7
- (8) Figure 8
- (9) Figure 9

3. Access Plates and Panel Identification

- A. Access plates and panels have identifiers with a series of numbers and letters. These identifiers give the zone, the panel identifier, and the location in the zone.

- (1) Zones are identified by a three-number sequence that is shown in Airplane Zoning - Description and Operation.
- (2) The Primary identifiers follow a three-number sequence, with the first plate/panel identified as **◆A,◆** the second plate/panel identified as **◆B◆** and so on.
- (3) Locators follow the primary identifier and identify the top, bottom, left, right or internal location of the plate/panel.

- B. As an example, access plate 521AB identifies:

- (1) Zone Location (521).
- (2) The first panel in the zone (panel A).
- (3) Orientation of the panel (B for bottom).

Table 1. Fuselage Access Plates/Panels Identification.

Panel	Equipment Located In Area (Refer to Figure 1)
253AC	Fuel Sump Tank
312AR	Oxygen filler Valve

Table 2. Model 208 Floorboard Access Plates/Panels Identification.

Panel	Equipment Located In Area (Refer to Figure 2)
211AC	Heater Duct and Rudder Trim
211AL	Fuel Control Valve
211BL	Rudder Torque Tube
211CL	Rudder Pedal Linkage
211DL	Structure
211EL	Control Column, Aileron Cables and Pulleys
212AR	Rudder Pedal Linkage
212BR	Rudder Torque Tube

212CR	Rudder Torque Tube, TKS Tubing
212DR	Structure
212ER	Structure
212FR	Control Column, Aileron Cables and Pulleys, TKS Tubing
215AL	Structure
216AR	Structure, TKS Tubing
216AC	Rudder Pulleys
216BC	Rudder Pulleys
231AL	Heater Duct
231BL	Aileron Pulleys, Elevator Bell Crank, Rudder and Elevator Trim Cables and Transponder Antenna
231CL	Heater Duct
231DL	Elevator and Elevator Trim Cables, DME Antenna, and TKS Tank Vent Line, TKS Tubing
232AR	Heater Duct
232BR	No. 2 Glide Slope Receiver and RMI Dynaverter, AHRS No. 2, TKS tank vent line
232AC	Elevator Bell Crank, Rudder and Elevator Trim, TKS Tank Vent Line
232CR	Heater Duct, TKS Tubing
232DR	Autopilot Roll Actuator/Servor, TKS propeller proportioning unit (if installed), TKS Tubing
232BC	Rudder Pulleys, TKS level sender, TKS filler hose
251AL	Rudder, Elevator and Elevator Trim Cables, TKS Tubing, TKS Filler Tubing
251BL	Fuel Lines and Heating Ducts, TKS Tubing, TKS Filler Tubing
251CL	Aileron Cables and Fuel Lines, TKS Tubing, TKS Filler Tubing
251DL	Fuel Lines and Heating Ducts, TKS Tubing
251EL	Fuel Lines, TKS Tubing
251FL	Rudder, Elevator, Elevator Trim Cables, TKS Tubing
251GL	Heating Ducts, TKS Tubing
251HL	TKS Filler Tube
252AR	Electrical Wiring and Heating Ducts, TKS Tubing
252BR	Aileron Cable, TKS Propeller Proportioning Unit (If Installed), TKS Tubing
252CR	Electrical Wiring and Heating Ducts
252DR	Structure
252ER	Structure
252FR	Electrical Wiring and Heating Ducts
252GR	TKS Tubing
255AL	Rudder, Elevator and Elevator Trim Cables
255BL	Heating Ducts, TKS Tubing
255CL	Structure
255DL	Rudder, Elevator and Elevator Trim Cables
255EL	Heating Ducts, TKS Tubing
255FL	Structure
255GL	Rudder, Elevator and Elevator Trim Cables
255HL	Structure, TKS Tubing

255JL	Rudder, Elevator, Elevator Trim Cables, TKS Tubing
255KL	Structure, TKS Tubing
255LL	Rudder, Elevator an Elevator Trim Cables
255ML	Structure, TKS Tubing
255NL	Rudder, Elevator an Elevator Trim Cables
255PL	Structure, TKS Tubing
255QL	Rudder, Elevator an Elevator Trim Cables
255RL	Structure, TKS Tubing
255SL	Rudder, Elevator an Elevator Trim Cables
255TL	Structure, TKS Tubing
256AR	Structure
256BR	Electrical Wiring and Heating Ducts
256CR	Structure
256DR	Structure
256ER	Electrical Wiring and Heating Ducts
256FR	Structure
256GR	Structure
256HR	Electrical Wiring
256JR	Structure
256KR	Electrical Wiring
256LR	Structure
256MR	Electrical Wiring
256NR	Structure
256PR	Electrical Wiring
256QR	Structure
256RR	Electrical Wiring
256SR	Structure
256TR	Electrical Wiring

Table 3. Model 208 Cargomaster Access Plates/Panels Identification.

Panel	Equipment Located In Area (Refer to Figure 3)
211AC	Heater Duct and Rudder Trim
211AL	Fuel Control Valve
211BL	Rudder Torque Tube
211CL	Rudder Pedal Linkage
211DL	Structure
211EL	Control Column, Aileron Cables and Pulleys
212AR	Rudder Pedal Linkage
212BR	Rudder Torque Tube
212CR	Rudder Torque Tube, TKS Tubing
212DR	Structure
212ER	Structure

212FR	Control Column, Aileron Cables and Pulleys, TKS Tubing
215AL	Structure
216AR	Structure, TKS Tubing
216AC	Rudder Pulleys
216BC	Rudder Pulleys
231AL	Heater Duct
231BL	Aileron Pulleys, Elevator Bell Crank, Rudder and Elevator Trim Cables and Transponder Antenna
231CL	Heater Duct
231DL	Elevator and Elevator Trim Cables, DME Antenna TKS Tank Vent Line
232AR	Heater Duct, TKS Tubing
232BR	No. 2 Glide Slope Receiver and RMI Dynaverter, AHRS No. 2, TKS vent line
232AC	Elevator Bell Crank, Rudder and Elevator Trim
232CR	Heater Duct, TKS Tubing
232DR	Autopilot Roll Actuator/Servor, TKS propeller proportioning unit (if installed), TKS Tubing
232BC	Rudder Pulleys, TKS level sender, TKS Tubing
251AL	Rudder, Elevator an Elevator Trim Cables, TKS Tubing, TKS Filler Tubing
251BL	Fuel Lines and Heating Ducts, TKS Tubing, TKS Filler Tubing
251CL	Aileron Cables and Fuel Lines, TKS Tubing
251DL	Fuel Lines and Heating Ducts, TKS Tubing
251EL	Fuel Lines, TKS Tubing
251FL	Rudder, Elevator an Elevator Trim Cables
251GL	Heating Ducts, TKS Tubing
251HL	TKS Tubing
252AR	Electrical Wiring and Heating Ducts
252BR	Aileron Cable, TKS Propeller Proportioning Unit (If Installed), TKS Tubing
252CR	Electrical Wiring and Heating Ducts
252DR	Structure
252ER	Structure
252FR	Electrical Wiring
252GR	TKS Tubing
255AL	Rudder, Elevator an Elevator Trim Cables
255BL	Heating Ducts, TKS Tubing
255CL	Structure
255DL	Rudder, Elevator an Elevator Trim Cables
255EL	Heating Ducts, TKS Tubing
255FL	Structure
255GL	Rudder, Elevator an Elevator Trim Cables
255HL	Structure, TKS Tubing
255JL	Rudder, Elevator an Elevator Trim Cables
255KL	Structure, TKS Tubing
255LL	Rudder, Elevator an Elevator Trim Cables

255ML	Structure, TKS Tubing
255NL	Rudder, Elevator an Elevator Trim Cables
255PL	Structure, TKS Tubing
255QL	Rudder, Elevator an Elevator Trim Cables
255RL	Structure, TKS Tubing
255SL	Rudder, Elevator an Elevator Trim Cables
255TL	Structure, TKS Tubing
256AR	Structure
256BR	Electrical Wiring
256CR	Structure
256DR	Structure
256ER	Electrical Wiring
256FR	Structure
256GR	Structure
256HR	Electrical Wiring
256JR	Structure
256KR	Electrical Wiring
256LR	Structure
256MR	Electrical Wiring
256NR	Structure
256PR	Electrical Wiring
256QR	Structure
256RR	Electrical Wiring
256SR	Structure
256TR	Electrical Wiring

Table 4. Model 208B and 208B Super Cargomaster Panels.

Panel	Equipment Located In Area (Refer to Figure 4)
211AC	Heater Duct and Rudder Trim
211AL	Fuel Control Valve
211BL	Rudder Torque Tube
211CL	Rudder Pedal Linkage
211DL	Structure
211EL	Control Column, Aileron Cables and Pulleys
212AR	Rudder Pedal Linkage
212BR	Rudder Torque Tube
212CR	Rudder Torque Tube, TKS Tubing
212DR	Structure
212ER	Structure
212FR	Control Column, Aileron Cables and Pulleys, TKS Tubing
215AL	Structure
216AR	Structure, TKS Tubing

216AC	Rudder Pulleys
216BC	Rudder Pulleys
231AL	Heater Duct
231BL	Aileron Pulleys, Elevator Bell Crank, Rudder and Elevator Trim Cables and Transponder Antenna
231CL	Heater Duct
231DL	Elevator and Elevator Trim Cables and DME Antenna
232AR	Heater Duct, TKS Tubing
232BR	No. 2 Glide Slope Receiver and RMI Dynaverter, AHRS No. 2
232AC	Elevator Bell Crank, Rudder and Elevator Trim
232CR	Heater Duct, TKS Tubing
232DR	Autopilot Roll Actuator/Servor, TKS Tubing
232BC	Rudder Pulleys
251AL	Rudder, Elevator and Elevator Trim Cables
251BL	Rudder, Elevator and Elevator Trim Cables
251CL	Fuel Lines
251DL	Aileron Cables, Fuel Lines, and Universal Outlet Wiring (if installed)
251EL	Rudder, Elevator and Trim Cables, TKS Tubing
251FL	Fuel Lines, TKS Tubing
251GL	Structure
251HL	Fuel Lines, TKS Tubing
251JL	Structure, TKS Tubing
251KL	Fuel Lines, TKS Tubing
251LL	Structure, TKS Tubing
251ML	Rudder, Elevator and Elevator Trim Cables
251NL	Structure, TKS Tubing
251PL	TKS Tubing
252AR	Electrical Wiring and Heating Ducts
252BR	Aileron Cable
252CR	Electrical Wiring, Heating Ducts, and Universal Outlet Wiring (if installed)
252DR	Structure, TKS Propeller Proportioning Unit (If Installed), TKS Tubing
252ER	Structure, TKS Propeller Proportioning Unit (If Installed), TKS Tubing
252FR	Electrical Wiring
252GR	Electrical Wiring, TKS Tubing
252HR	Structure, TKS Tubing
252JR	Electrical Wiring
252KR	Structure
252LR	Structure
252MR	Electrical Wiring
252NR	TKS Tubing
255AL	Rudder, Elevator and Elevator Trim Cables
255BL	Heating Ducts, TKS Tubing

255CL	Structure
255DL	Rudder, Elevator and Elevator Trim Cables
255EL	Heating Ducts
255FL	Structure
255GL	Rudder, Elevator and Elevator Trim Cables
255HL	Structure, TKS Tubing
255JL	Rudder, Elevator and Elevator Trim Cables
255KL	Structure
255LL	Rudder, Elevator and Elevator Trim Cables, TKS Tubing
255ML	Structure
255NL	Rudder, Elevator and Elevator Trim Cables
255PL	Structure, TKS Tubing
255QL	Rudder, Elevator and Elevator Trim Cables
255RL	Structure
255SL	Rudder, Elevator and Elevator Trim Cables, TKS Tubing
255TL	Structure
255UL	Structure, TKS Tubing
255VL	Rudder, Elevator and Elevator Trim Cables
255WL	Structure, TKS Tubing
255XL	Rudder, Elevator and Elevator Trim Cables
255YL	Structure, TKS Tubing
256AR	Structure
256BR	Electrical Wiring
256CR	Structure
256DR	Structure
256ER	Electrical Wiring
256FR	Structure
256GR	Structure, Power Controller (if installed)
256HR	Electrical Wiring
256JR	Structure
256KR	Electrical Wiring
256LR	Structure
256MR	Electrical Wiring
256NR	Structure
256PR	Electrical Wiring
256QR	Structure
256RR	Electrical Wiring
256SR	Structure
256TR	Electrical Wiring
256VR	Structure
256WR	Electrical Wiring

256XR	Structure
256YR	Electrical Wiring
255AAL	Structure, TKS Tubing
255ABL	Rudder, Elevator and Elevator Trim Cables, TKS Tubing
255ACL	Structure
256ZR	Structure
256AAR	Electrical Wiring
256ABR	Structure
256ACR	Electrical Wiring

Table 5. Model 208B Passenger.

Panel	Equipment Located In Area (Refer to Figure 5)
211AC	Heater Duct and Rudder Trim
211AL	Fuel Control Valve
211BL	Rudder Torque Tube
211CL	Rudder Pedal Linkage
211DL	Structure
211EL	Control Column, Aileron Cables and Pulleys
212AR	Rudder Pedal Linkage
212BR	Rudder Torque Tube
212CR	Rudder Torque Tube
212DR	Structure
212ER	Structure
212FR	Control Column, Aileron Cables and Pulleys
215AL	Structure
216AR	Structure
216AC	Rudder Pulleys
216BC	Rudder Pulleys
231AL	Heater Duct
231BL	Aileron Pulleys, Elevator Bell Crank, Rudder and Elevator Trim Cables and Transponder Antenna
231CL	Heater Duct
231DL	Elevator and Elevator Trim Cables and DME Antenna
232AR	Heater Duct
232BR	No. 2 Glide Slope Receiver and RMI Dynaverter, AHRS No. 2
232AC	Elevator Bell Crank, Rudder and Elevator Trim
232CR	Heater Duct
232DR	Autopilot Roll Actuator/Servor
232BC	Rudder Pulleys
251AL	Rudder, Elevator and Elevator Trim Cables
251BL	Rudder, Elevator and Elevator Trim Cables
251CL	Fuel Lines and Heating Ducts
251DL	Aileron Cables, Fuel Lines, and Universal Outlet wiring (if installed)

251EL	Rudder, Elevator an Elevator Trim Cables
251FL	Fuel Lines and Heating Ducts
251GL	Structure
251HL	Fuel Lines and Heating Ducts
251JL	Structure
251KL	Fuel Lines and Heating Ducts
251LL	Structure
251ML	Rudder, Elevator an Elevator Trim Cables
251NL	Structure and Heating Duct
252AR	Structure
252BR	Electrical Wiring and Heating Ducts
252CR	Structure, TKS Propeller Proportioning Unit (If Installed), and Universal Outlet wiring (if installed)
252DR	Structure, TKS Propeller Proportioning Unit (If Installed)
252ER	Electrical Wiring, Heating Ducts, and TKS Propeller Proportioning Unit (If installed)
252FR	Aileron Cable
252GR	Electrical Wiring and Heating Ducts
252HR	Structure
252JR	Electrical Wiring and Heating Ducts
252KR	Structure
252LR	Structure
252MR	Electrical Wiring and Heating Ducts
255AL	Rudder, Elevator an Elevator Trim Cables
255BL	Structure and Heating Ducts
255CL	Structure
255DL	Rudder, Elevator an Elevator Trim Cables
255EL	Structure and Heating Ducts
255FL	Structure
255GL	Rudder, Elevator an Elevator Trim Cables
255HL	Structure and Heating Ducts
255JL	Structure, and Universal Outlet wiring (if installed)
255KL	Rudder, Elevator an Elevator Trim Cables
255LL	Structure and Heating Ducts
255ML	Structure
255NL	Rudder, Elevator an Elevator Trim Cables
255PL	Structure and Heating Ducts
255QL	Structure
255RL	Rudder, Elevator an Elevator Trim Cables
255SL	Structure
255TL	Rudder, Elevator an Elevator Trim Cables
255UL	Structure
255VL	Rudder, Elevator an Elevator Trim Cables

255WL	Structure
255XL	Rudder, Elevator an Elevator Trim Cables
255YL	Structure
255ZL	Rudder, Elevator an Elevator Trim Cables
255AAL	Structure
255ABL	Rudder, Elevator an Elevator Trim Cables
255ACL	Structure
256AR	Structure
256BR	Electrical Wiring and Heating Ducts
256CR	Structure
256DR	Structure
256ER	Electrical Wiring and Heating Ducts
256FR	Structure
256GR	Structure, Power controller (if installed)
256HR	Electrical Wiring and Heating Ducts
256JR	Structure and Universal Outlet wiring (if installed)
256KR	Structure
256LR	Electrical Wiring and Heating Ducts
256MR	Structure
256NR	Structure
256PR	Electrical Wiring and Heating Ducts
256QR	Structure
256RR	Structure
256SR	Electrical Wiring
256TR	Structure
256UR	Electrical Wiring
256VR	Structure
256WR	Electrical Wiring
256XR	Structure
256YR	Electrical Wiring
256ZR	Structure
256AAR	Electrical Wiring
256ABR	Structure
256ACR	Electrical Wiring

Table 6. Panels.

Panel	Equipment Located In Area (Refer to Figure 6)
226A	Elevator Trim
226B	Aileron and Rudder Trim
226C	Electric Elevator Trim
226D	Electric Elevator Trim

Table 7. Left Lower Wing Panels.

Panel	Equipment Located In Area (Refer to Figure 7)
501AB	Cabin Air Inlet Duct
501BB	Aileron Cables, Electrical Wiring and Deice Tubing, (if installed)
501CB	Aileron Cables, Electrical Wiring and Deice Tubing, (if installed)
501DB	Aileron Cables, Electrical Wiring and Deice Tubing, (if installed)
501EB	Aileron Cables, Electrical Wiring and Deice Tubing, (if installed)
503AB	Aileron Cables, Electrical Wiring and Deice Tubing, (if installed), TKS Proportioning Unit (if installed)
503BB	Aileron Cables, Stall Warning Detector, Electrical Wiring and Deice Tubing, (if installed), TKS Proportioning Unit (if installed)
503CB	Aileron Cables, Electrical Wiring and Deice Tubing, (if installed)
503DB	Aileron Cables, Pulleys and Bell Crank
503EB	Aileron and Spoiler Bell Cranks
503FB	Electrical Wiring
503GB	Electrical Wiring
503HB	Electrical Wiring
503JB	Electrical Wiring
511AB	Flow Control Valves, Pressure Switches, Fuel Level Sensor
521AB	Fuel Tank
521BB	Fuel Tank
521CB	Fuel Tank
521DB	Fuel Tank
521EB	Fuel Tank
523AB	Magnetometer
523BB	Fuel Level Sensor
525AB	Flap Bell Crank
525BB	Flap Interconnect Rod
525CB	Flap Bell Crank
525DB	Flap Interconnect Rod
525EB	Flap Cables
525FB	Flap Cables
525GB	Flap Cable and Pulley
551AB	Aileron Trim Actuator
575AB	Fuel Vent

Table 8. Right Lower Wing Panels.

Panel	Equipment Located In Area (Refer to Figure 8)
601AB	Cabin Air Inlet Duct
601BB	Aileron Cables, Electrical Wiring and Deice Tubing, (if installed)
601CB	Aileron Cables, Electrical Wiring and Deice Tubing, (if installed)
601DB	Aileron Cables, Electrical Wiring and Deice Tubing, (if installed)
601EB	Aileron Cables, Electrical Wiring and Deice Tubing, (if installed)

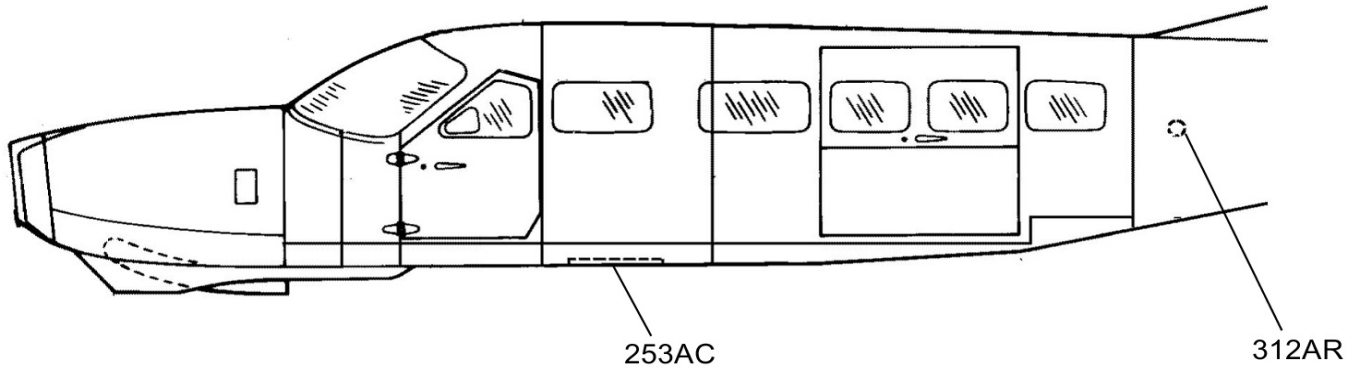
603AB	Aileron Cables, Electrical Wiring and Deice Tubing, (if installed), TKS Proportioning Unit (if installed)
603BB	Aileron Cables, Electrical Wiring and Deice Tubing, (if installed), TKS Proportioning Unit (if installed)
603CB	Aileron Cables, Electrical Wiring and Deice Tubing, (if installed)
603DB	Aileron Cables, Pulleys and Bell Crank
603EB	Aileron and Spoiler Bell Cranks
603FB	Electrical Wiring
603GB	Electrical Wiring
603HB	Electrical Wiring
603JB	Electrical Wiring
611AB	Air Conditioner Evaporator, Fuel Tank Shutoff Valves, Fuel Level Sensor
621AB	Fuel Tank
621BB	Fuel Tank
621CB	Fuel Tank and Strut Fitting
621DB	Fuel Tank
621EB	Fuel Tank
623AB	Flux Gate, magnetometer
623BB	Fuel Level Sensor
625AB	Flap Bell Crank
625BB	Flap Interconnect Rod
625CB	Flap Bell Crank
625DB	Flap Interconnect Rod
625EB	Flap Cables
625FB	Flap Cables
625GB	Flap Cable and Pulley
651AB	Aileron Trim Actuator
675AB	Fuel Vent

Table 9. Aft Fuselage, Horizontal and Vertical Stabilizer Panels.

Panel	Equipment Located In Area (Refer to Figure 9)
320A	Elevator Bell Crank and Rudder Cables, TKS Proportioning Units (IF Installed), TKS Low Pressure Switches (IF Installed)
330A	Rudder Gustlock
340A	Emergency Locator Transmitter
341A	Deice Line (IF Installed)
341B	Antenna Harness
341C	TKS Deice Line (IF Installed)
343A	Rudder Balance Weight
373AL	Elevator Trim Actuator
373BL	Deice Line (IF Installed)
374AR	Elevator Trim Actuator
374BR	Deice Line (IF Installed)

Figure 1 : Sheet 1 : Fuselage Access Plates/Panels Identification

A22944

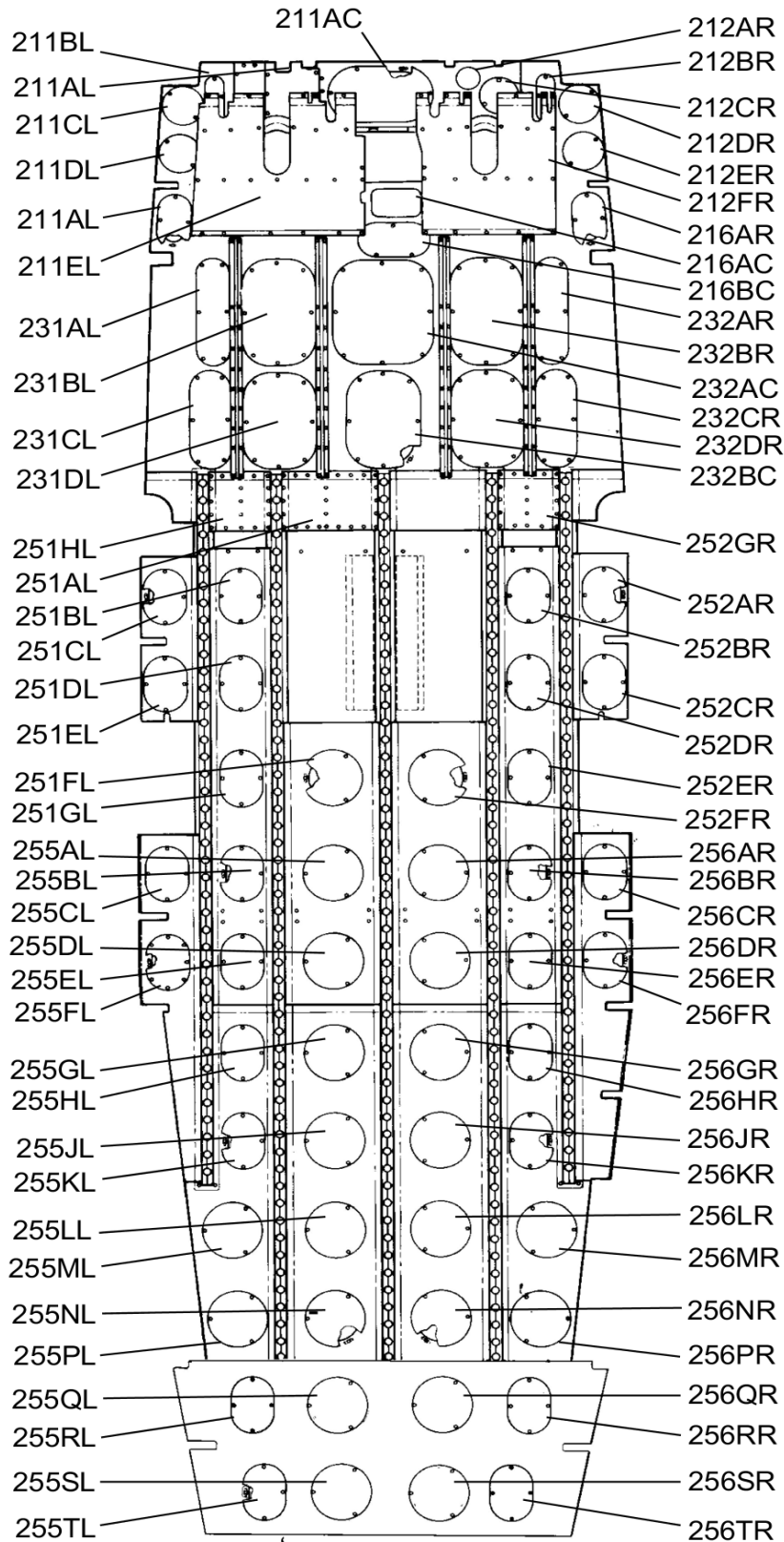


VIEW LOOKING AT LEFT SIDE OF FUSELAGE

2610R2003

Figure 2 : Sheet 1 : Model 208 Floorboard Access Plates/Panels Identification

A22946

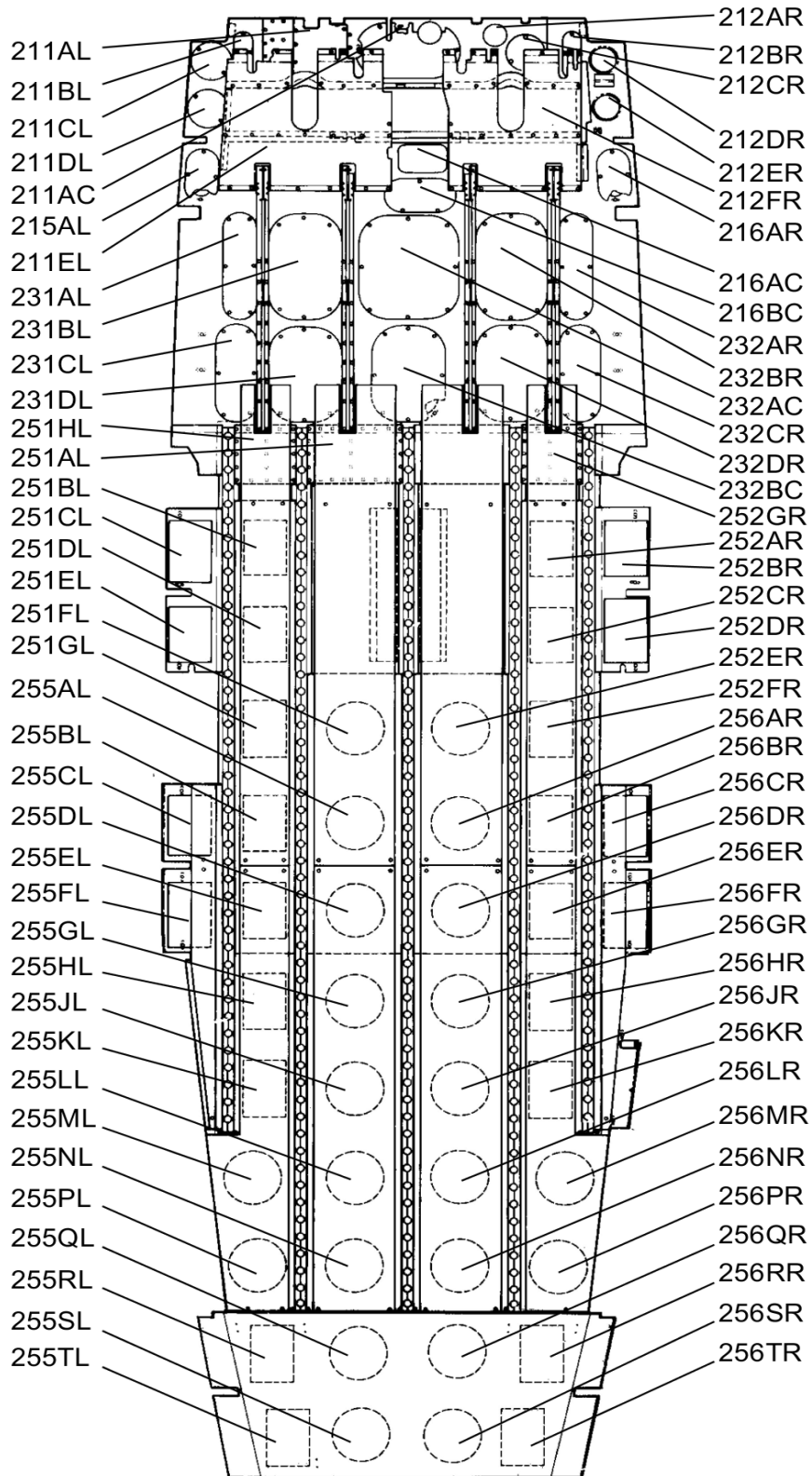


LEGEND	
L	LEFT
C	CENTER
R	RIGHT

2611R4005
2611R3001

Figure 3 : Sheet 1 : Model 208 Cargomaster Access Plates/Panels Identification

A22951

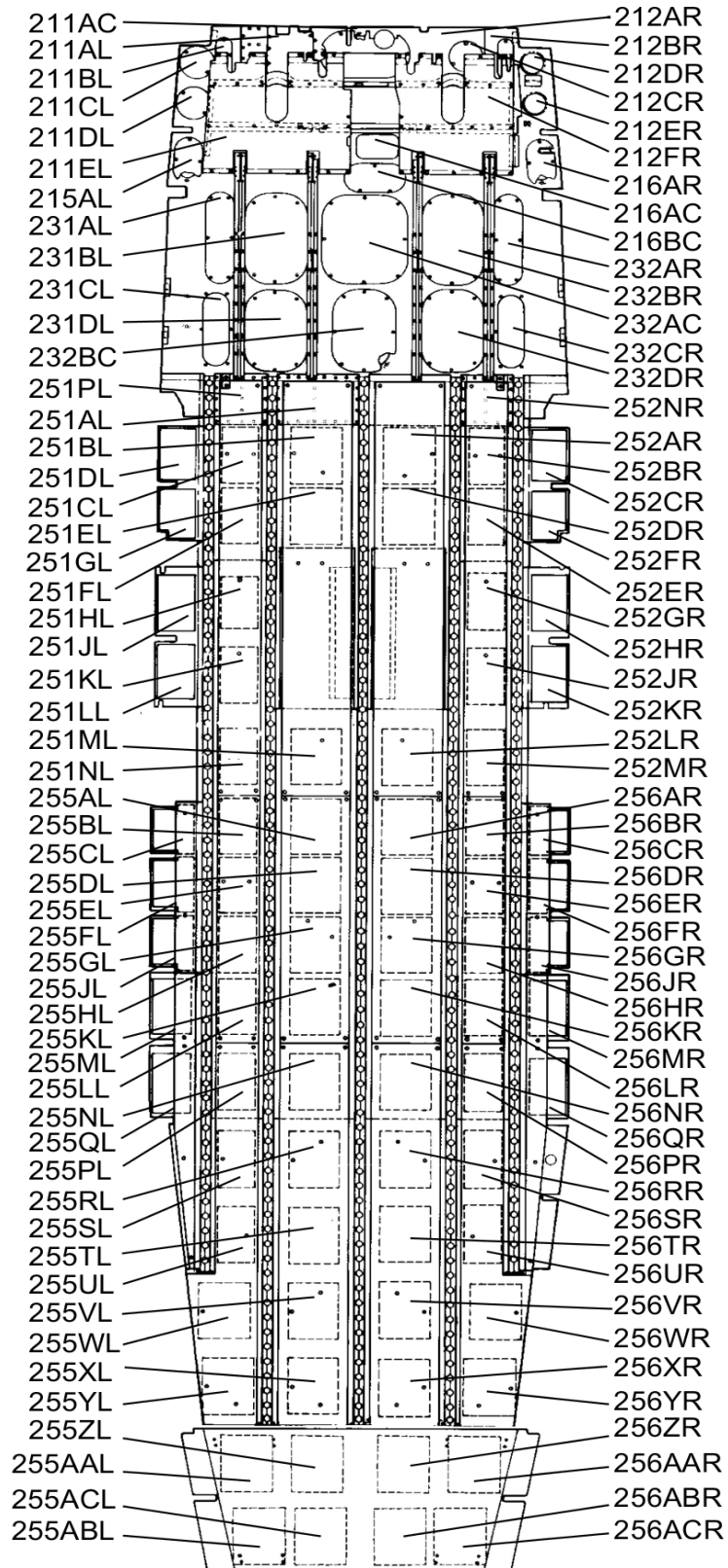


MODEL 208 CARGOMASTER ONLY

2611R3004
2611R3008

Figure 4 : Sheet 1 : Model 208B and 208B Super Cargomaster Panels

A22957

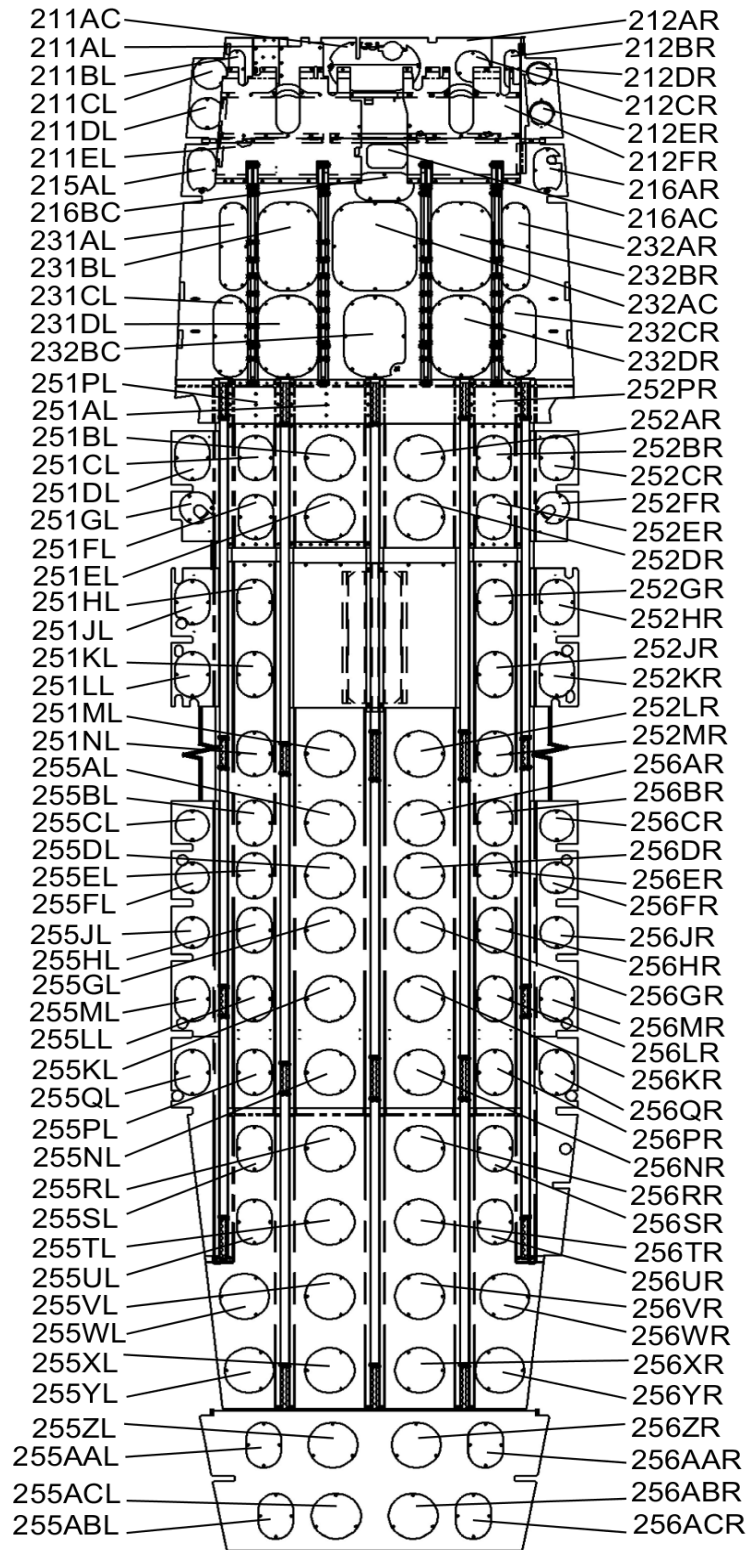


MODEL 208B AND 208B SUPER CARGOMASTER ONLY

2611R4003
2611R3008

Figure 5 : Sheet 1 : Model 208B Passenger

A22953

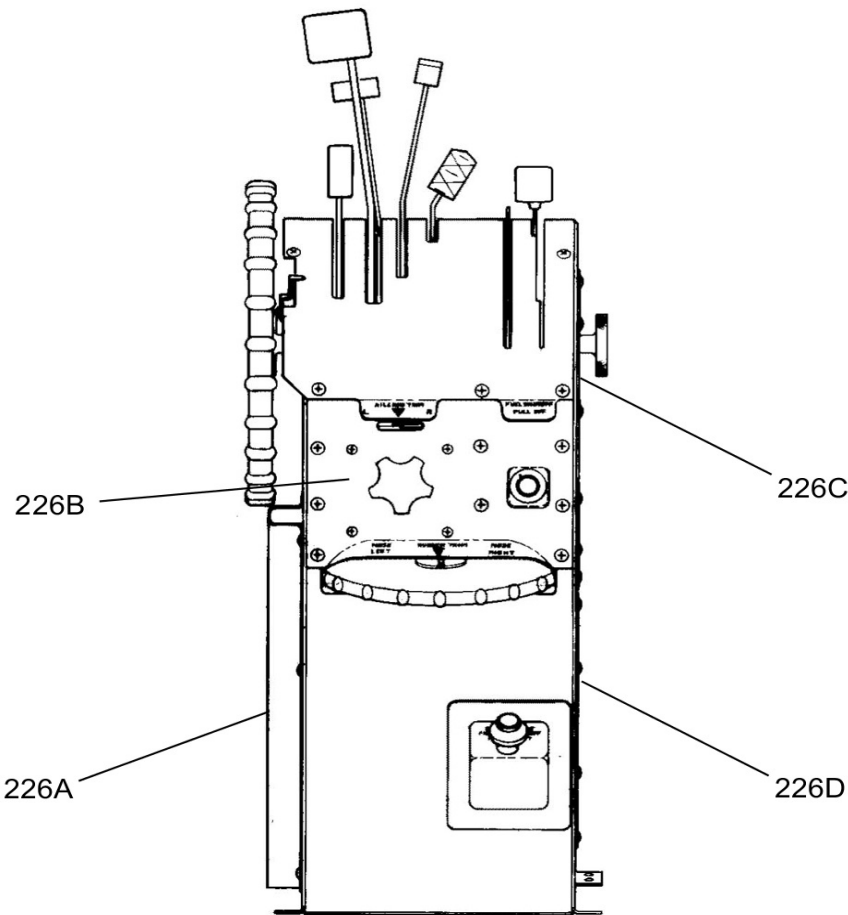


MODEL 208B PASSENGER

2611R4003
2611R3008

Figure 6 : Sheet 1 : Panels

A22966



2618R2015

Figure 7 : Sheet 1 : Left Lower Wing Panels

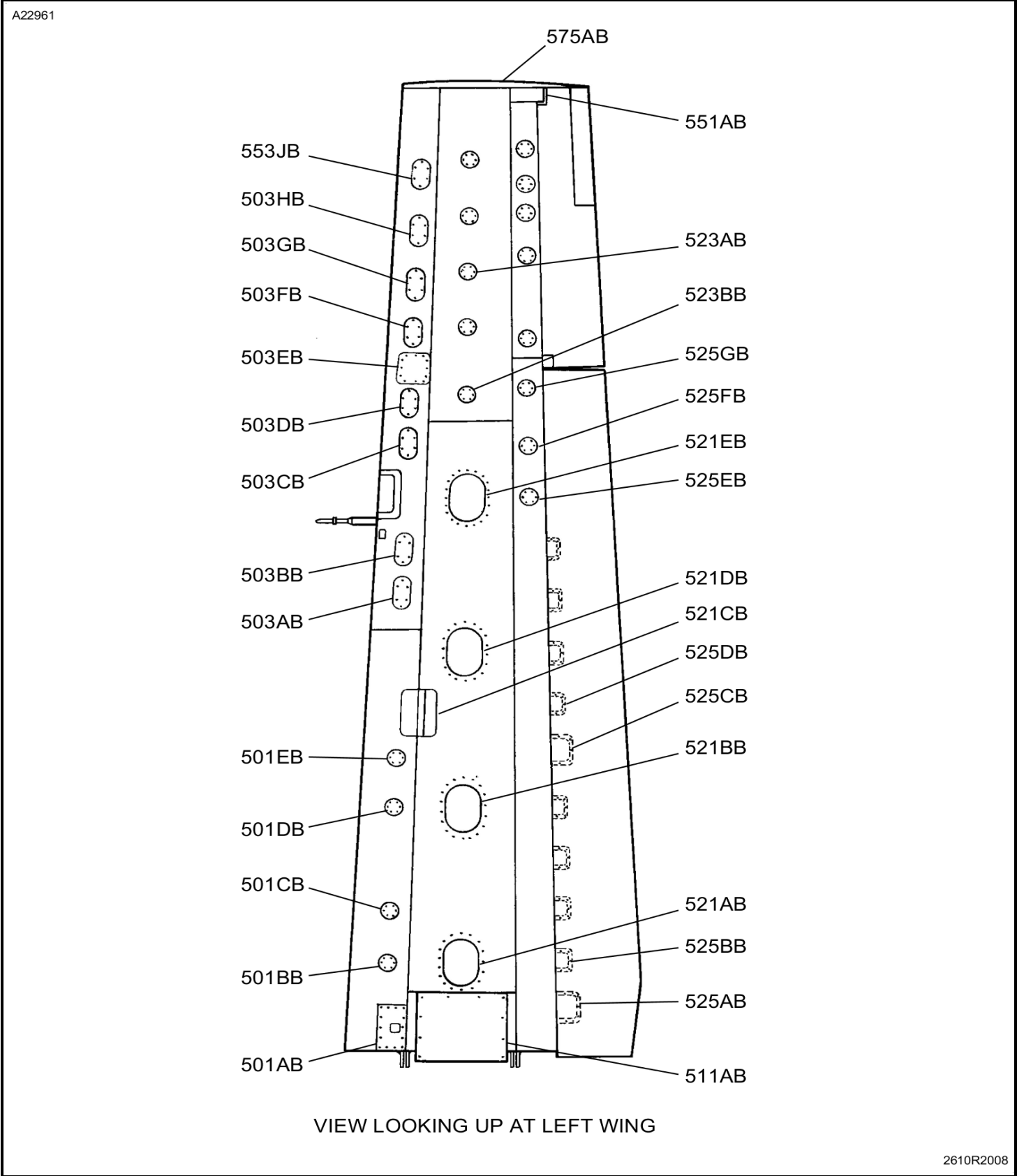


Figure 8 : Sheet 1 : Right Lower Wing Panels

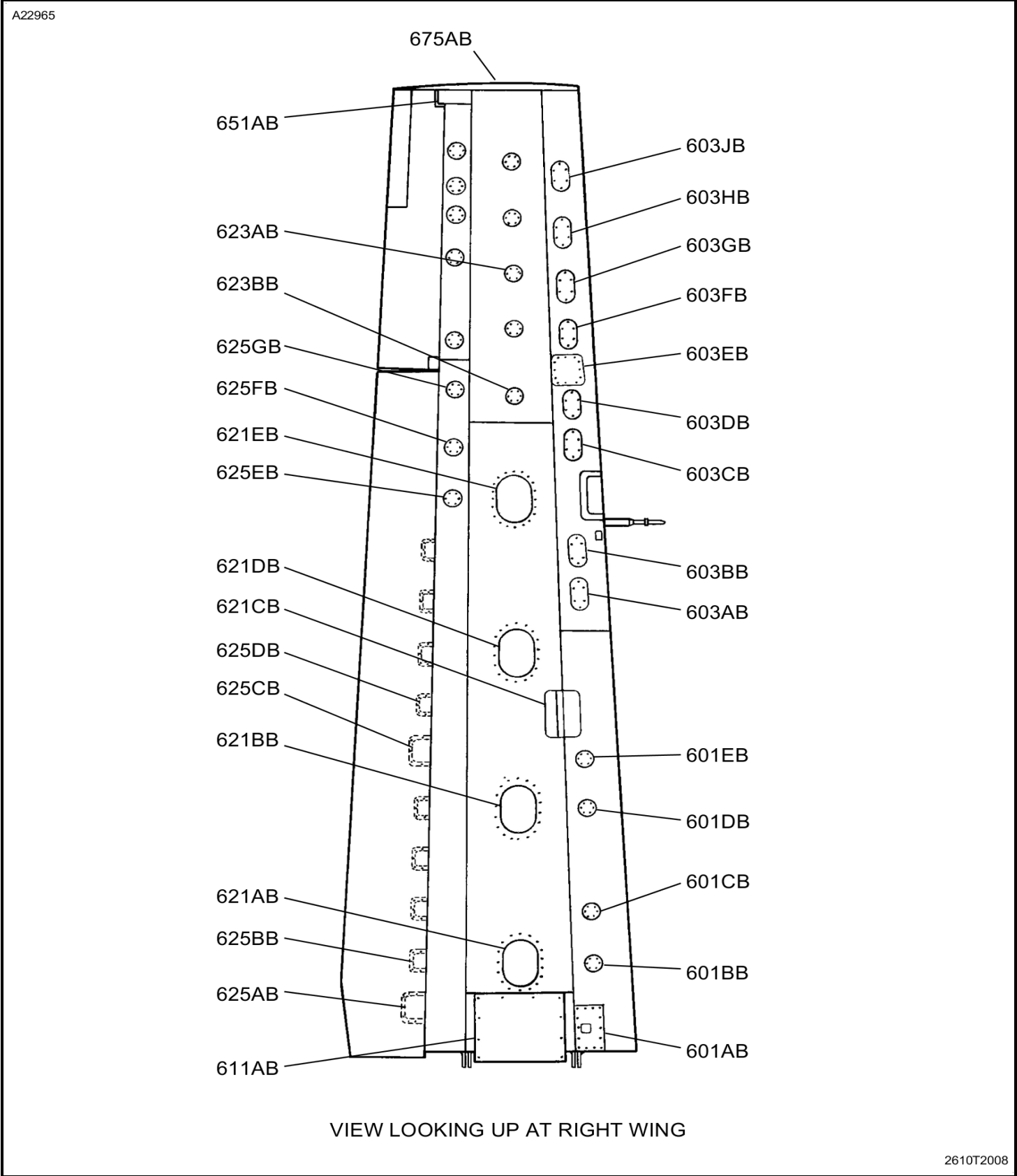
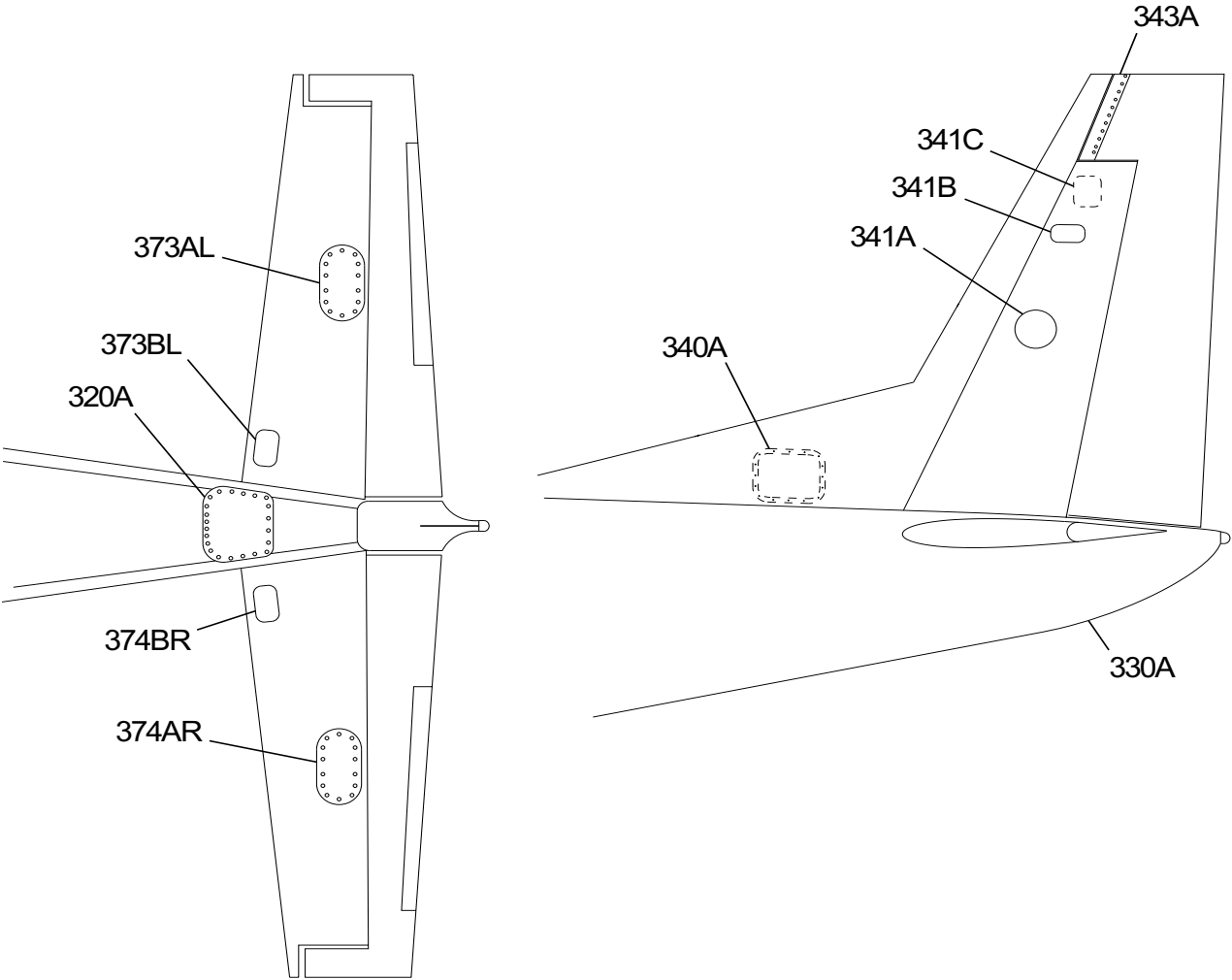


Figure 9 : Sheet 1 : Aft Fuselage, Horizontal and Vertical Stabilizer Panels

A22967



VIEW LOOKING UP AT TAILCONE

2610T1009